

Dreiphasen Motordrosseln

Three-phase motor choke - Bobines avec moteur triphasées

D

Dreiphasen-Motordrossel nach EN 61558, VDE 0570, Teil 2-20. Nennspannung 3 x 400 V, Schaltfrequenz 2-16 kHz, Spannungsabfall ca. 1%. Kabellänge 1-30 m. 2-50A Anschluss an Klemmen, >50A Cu-Schienen. Vakuum-impregniert, vorbereitet für Schutzklasse I, ta 40°C, IP 00

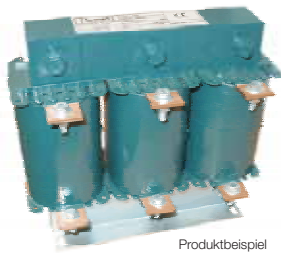
E

Three-phase motor choke according to EN 61558, VDE 0570, part 2-20. Rated voltage 3 x 400 V, switching frequency 2-16 kHz, . 2-50A Terminal connection, >50A Cu rails. Vacuum impregnated, prepared for safety class I.

F

Bobine de circuit filtrant triphasée selon EN 61558, VDE 0570, partie 2-20. Facteur d'étranglement $p = 0,07$ (7%). Tension nominale: 3 x 400 V - Fréquence nominale: 50 Hz plus oscillations harmoniques. 2-50A Raccordement aux bornes, >50A aux rails Cu. Imprégnation sous vide, préparé pour classe de protection I.

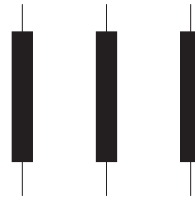
Typ MOD



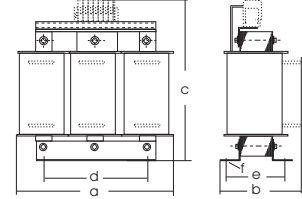
Bildzeichen
Sign
Symbole
nach
DIN VDE



Anschlussplan
Wiring Diagram
Plan des Bornes



Maßbild
Dimensions
Dimensions



| Strom Current - Courant | Artikel Nr. für Standardausführungen Article-no. for standard execution - No. d'article pour exécutions standard | Abmessungen in ca. mm Dimensions - Dimensions | | | | | | Gewicht Weight - Poids | | |
|----------------------------|---|--|-------|-------|-----|-------|------|---------------------------|----------|------------|
| | | a | b | c | d | e | f | Klemme Ø | Cu kg | Ges. kg |
| Nennstrom A | | | | | | | | | | |
| 2 | 729313 | 96 | 49,0 | 130,5 | 56 | 36,0 | 4,8 | X | 0,09 | 0,80 |
| 4 | 729314 | 96 | 49,0 | 130,5 | 56 | 36,0 | 4,8 | X | 0,20 | 0,86 |
| 8 | 729315 | 96 | 49,0 | 130,5 | 56 | 36,0 | 4,8 | X | 0,31 | 0,98 |
| 10 | 729316 | 96 | 59,0 | 130,5 | 56 | 46,0 | 4,8 | X | 0,30 | 1,40 |
| 12 | 729317 | 120 | 56,0 | 155,0 | 90 | 42,0 | 4,8 | X | 0,13 | 1,45 |
| 16 | 729318 | 120 | 56,0 | 155,0 | 90 | 42,0 | 4,8 | X | 0,20 | 1,50 |
| 20 | 729319 | 120 | 56,0 | 155,0 | 90 | 42,0 | 4,8 | X | 0,25 | 1,55 |
| 25 | 729320 | 120 | 66,0 | 155,0 | 90 | 52,0 | 4,8 | X | 0,25 | 2,24 |
| 32 | 729321 | 120 | 66,0 | 155,0 | 90 | 52,0 | 4,8 | X | 0,36 | 2,35 |
| 40 | 729322 | 150 | 70,5 | 180,0 | 113 | 53,6 | 5,8 | X | 0,46 | 3,10 |
| 50 | 729323 | 150 | 70,5 | 180,0 | 113 | 53,6 | 5,8 | X | 0,73 | 3,46 |
| 63 | 729324 | 150 | 110,5 | 132,0 | 113 | 68,5 | 5,8 | | 0,53 | 4,78 |
| 80 | 729325 | 150 | 110,5 | 132,0 | 113 | 68,5 | 5,8 | | 0,91 | 5,14 |
| 100 | 729326 | 150 | 110,5 | 132,0 | 113 | 68,5 | 5,8 | | 1,22 | 5,44 |
| 125 | 729327 | 150 | 110,5 | 132,0 | 113 | 68,5 | 5,8 | | 1,78 | 5,98 |
| 160 | 729328 | 240 | 125,0 | 208,0 | 185 | 78,0 | 10,0 | | 1,43 | 11,90 |
| 200 | 729329 | 240 | 125,0 | 208,0 | 185 | 78,0 | 10,0 | | 2,34 | 12,80 |
| 250 | 729477 | 240 | 125,0 | 208,0 | 185 | 78,0 | 10,0 | | 2,60 | 13,00 |
| 320 | 729478 | 240 | 135,0 | 208,0 | 185 | 88,0 | 10,0 | | 3,38 | 16,50 |
| 400 | 729479 | 240 | 135,0 | 208,0 | 185 | 88,0 | 10,0 | | 7,30 | 20,30 |
| 500 | 729480 | 240 | 190,0 | 208,0 | 185 | 98,0 | 10,0 | | 6,90 | 22,80 |
| 630 | 729481 | 240 | 204,0 | 208,0 | 185 | 112,0 | 10,0 | | 6,90 | 26,60 |
| 800 | 729482 | 300 | 194,0 | 260,0 | 224 | 96,0 | 10,0 | | 17,40 | 38,40 |
| 1000 | 729483 | 300 | 219,0 | 260,0 | 224 | 121,0 | 10,0 | | 17,60 | 49,30 |
| 1250 | 729484 | 360 | 228,0 | 305,0 | 264 | 130,0 | 10,0 | | 14,00 | 50,90 |
| 1600 | 729485 | 360 | 240,0 | 305,0 | 264 | 142,0 | 10,0 | | 27,80 | 73,40 |
| 2000 | 729486 | 360 | 275,0 | 305,0 | 264 | 177,0 | 10,0 | | 22,90 | 91,00 |

Rote Art.-Nr. ab Lager lieferbar - Red Art.-No. available ex stock - No.d'article rouge immédiatement livrables ex stock

Sonderausführungen
Special executions - Exécutions spéciales

auf Anfrage
on request - sur demande